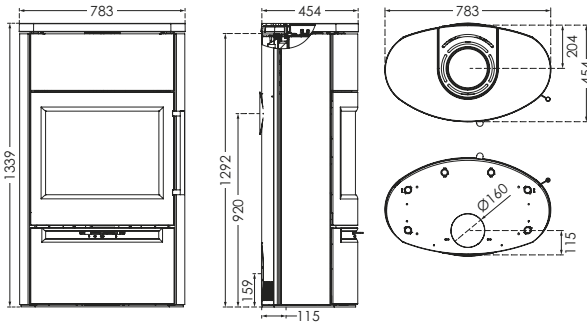


TT55 SERIES TECHNICAL SPECIFICATIONS

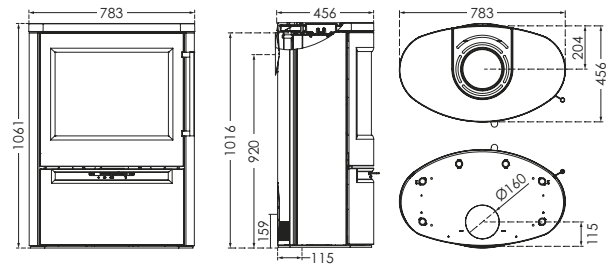
TT55RHT

Combustion chamber W/D: 570/300
Weight in kg: 226 + 60 kg Powerstone



TT55R

Combustion chamber W/D: 570/300 Weight in kg: 201

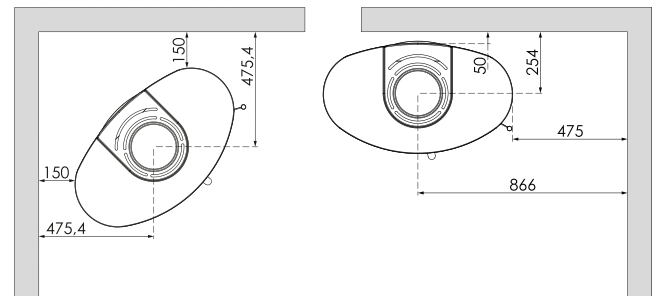
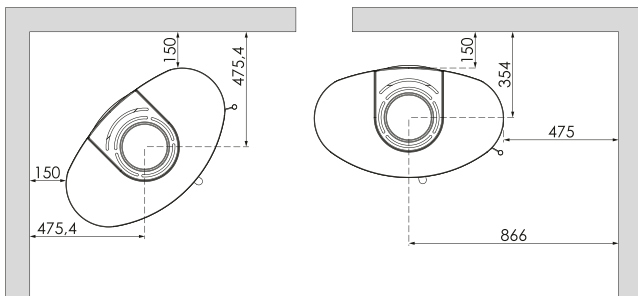


DISTANCE TO COMBUSTIBLE MATERIAL

TT55RHT/TT55R

WITH UNINSULATED FLUE PIPE

WITH INSULATED FLUE PIPE



In order to avoid discolouration of painted and treated surfaces, TernaTech recommends the same distance from flammable materials as for non-flammable materials. This distance increases the convection itself around the stove and also eases cleaning. All distances relate solely to the distance of the stove from flammable materials. No account has been taken of national requirements for the use of stove flues or their distance from flammable materials.